

**Beginners
Guide to
Midjourney's
Chaos
Parameter.**

**Have you ever looked at a
Midjourney prompt and said...**

"Wtf is (-c 50)?"

Don't worry...it's not as complicated as it looks.

This is Midjourney's Chaos parameter.

**And it gives you more variation in your image
grid...**

Do you **always need** to use **Chaos**?

No.

Can it make your images **more dynamic**?

Yes.

So let's take a look at MJ's **Chaos** parameter.

First...we'll look at **(2)** grid examples.

One with **low Chaos...**

And

One with **high Chaos.**

Here's the prompt:

Low Chaos: freeze motion, side profile, candid teenager walking in the streets of Burano, 50mm, cinematic lighting, street photography **-c 0**

High Chaos: freeze motion, side profile, candid teenager walking in the streets of Burano, 50mm, cinematic lighting, street photography **-c 100**

Low Chaos.

Prompt: freeze motion, side profile, candid teenager walking in the streets of Burano, 50mm, cinematic lighting, street photography -c0



High Chaos.

Prompt: freeze motion, side profile, candid teenager walking in the streets of Burano, 50mm, cinematic lighting, street photography **-c 100**



Notice the difference?

Same prompt...wildly different output.

Just by changing the parameter.

Let's keep going...

-c 0



-c 100



The high level of Chaos...

Decreased the prompt coherence...and created it's own direction...

But...

There is definitely more variation in the grid.



Soooo...

If you're not getting enough variety from your prompt...

You just need to **add a parameter.**

But first...

What is a Parameter?

Parameters are text “codes” at the end of the prompt.

Typically, they look like this (`-c 50`).

To add parameters to your prompt you need to add (2) dashes...

(-)

The parameter...

(-c)

A space and then the value...

(-c <value>)

Finished parameter: -c 50

Alright, enough chit-chat.

Let's go deep on the **Chaos parameter.**

Chaos (-c)

Chaos will influence how "**varied**" the image grids are.

Lower value = **closely related** image grids

Higher value = **highly varied** image grids

This is useful if you're **not sure** what you're looking for.

Chaos in Prompting.

Prompt Parameter: `--c <value>`

Value Range: 0-100

Midjourney Default: 0

Format example: `--c 50` or `--chaos 50`

`--c 0` (Less Chaos)

`--c 100` (More Chaos)

Quick Note:

The higher you dial up the Chaos parameter...

The further away from the prompt you'll get.

MJ will take more creative liberty.

So finding a nice balance is key.

Let's take a look at some examples...

First, we'll start with a very vague prompt.

Vague prompts = More MJ variation

Detailed prompts = Less MJ variation

Comfy Living Room.

Prompt: editorial photo, comfy-chiq living room --c0



Notice the difference?

Because we provided less direction for MJ...

It had to fill in the blanks.



Because the prompt is vague...

When we dial up the **-Chaos value the grids should be very varied**

Let's see what happens.

We'll use **Chaos values from **-c 0** to **-c 100**.**

So you can see the progression.

--c 0 (Default)



--c 5



--c 10



--c 20



--c 30



--c 40



--c 50



--c 60



--c 70



--c 80



--c 90



--c 100



--c 0 (Default)



--c 5



--c 10



--c 20



--c 30



--c 40



--c 50



--c 60



--c 70



--c 80



--c 90



--c 100



Notice how we start simple...

And get super unique.

That's what Chaos does. (Way more variety)

--c 0 (Default)



--c 50



--c 70



--c 100



Now let's dial up the prompt details.

Remember...

More detailed prompt = less variety in grid.

Comfy Living Room - Detailed.

Prompt: editorial photo, asymmetrical composition, comfy-chiq living room, rounded edges, deep green and white color scheme, stark contrasting colors, patterns and textures, interior design, color blocking -c0



Notice how MJ focused on the details.

Less room for interpretation.

More clear direction.

Vague.



Detailed.



Prompt Elements in Action.

Prompt: editorial photo, asymmetrical composition, comfy-chiq living room, rounded edges, deep green and white color scheme, stark contrasting colors, patterns and textures, interior design, color blocking -c0

Editorial Photo
Asymmetrical Composition
Rounded Edges
Interior Design

Color Blocking
Patterns & Textures
Contrasting Colors

Comfy Chiq
Living Room
Green + White
Contrasting Colors



Now, we'll dial up the Chaos on the detailed prompt.

And see the progression.

--c 0 (Default)



--c 5



--c 10



--c 20



--c 30



--c 40



--c 50



--c 60



--c 70



--c 80



--c 90



--c 100



--c 0



--c 5



--c 10



--c 20



--c 30



--c 40



--c 50



--c 60



--c 70



--c 80



--c 90



--c 100



We start close to the prompt...

And it goes rogue with higher values.

This is also what Chaos can do.

-c 0 (Default)



-c 10



-c 90



-c 100



Soooo

With vague prompts...

Using slightly higher chaos values will give you A LOT of variety.

With detailed prompts...

Using lower chaos value will give you good variation...that's close to the prompt.

(This all depends on your vision)

What happens if we use a character as the subject?

Character Prompt.

Prompt: extreme tonal balance, Candid woman walking in the snow in Bhutan, asymmetrical composition, 35mm dslr, moderate depth of field, street photography —c0



--c 0 (Default)



--c 5



--c 10



--c 20



--c 30



--c 40



--c 50



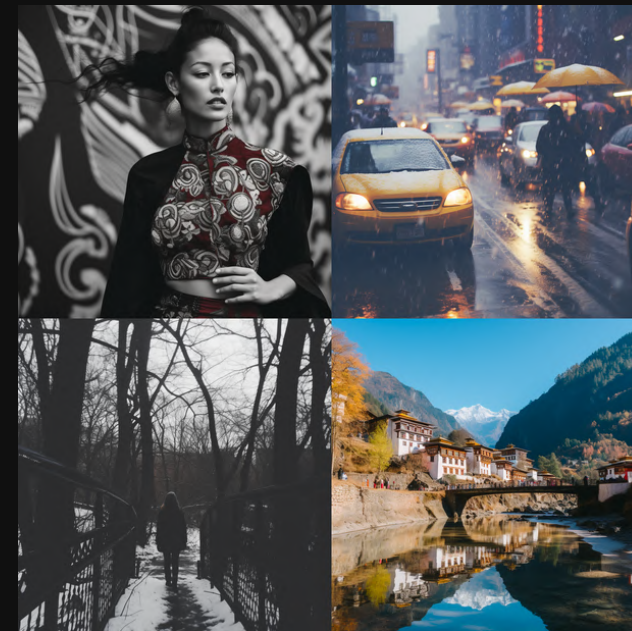
--c 60



--c 70



--c 80



--c 90



--c 100



--c 0 (Default)



--c 5



--c 10



--c 20



--c 30



--c 40



--c 50



--c 60



--c 70



--c 80



--c 90



--c 100



The tipping point was **-c 50**.

After that...we started losing coherence.

--c 0 (Default)



--c 10



--c 80



--c 100



Let's do one more and we'll wrap it up.

For this one...

We'll add a whole lot of **craziness to our prompt.**

And see where it goes.

Chaotic Prompt.

Prompt: no bad trips t-shirt, killer acid, friendly robot, in the style of otherworldly visions, screen printing, pop-art, vibrant illustrations, intricate detail -c0



--c 0 (Default)



--c 5



--c 10



--c 20



--c 30



--c 40



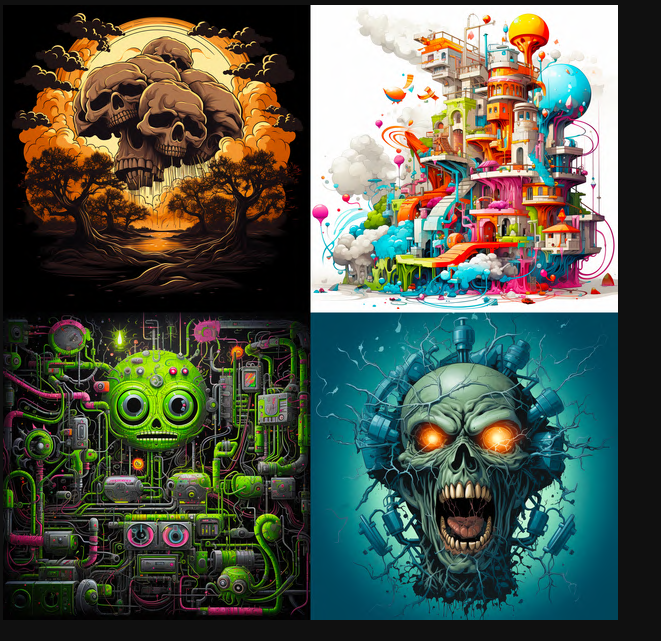
--c 50



--c 60



--c 70



--c 80



--c 90



--c 100



--c 0 (Default)



--c 5



--c 10



--c 20



--c 30



--c 40



--c 50



--c 60



--c 70



--c 80



--c 90



--c 100



Yes, that prompt was totally random.

And it yielded some wild results.

--c 0 (Default)



--c 10



--c 80



--c 1000



Quick Thoughts.

Chaos is great for giving you more options.

If you're prompts are looking to generic...try adding some Chaos.

IMO --c 100 is way too much firepower

I like to stay within --c (5-40)

(That's just my preference)

Higher values of Chaos will get less prompt coherence.

Prompt "coherence" is how much MJ listens to the elements you added to your prompt.

With art prompts...higher values can get some crazy results.

Until next time...



That's it.

Thanks for reading another carousel.

@Rory Flynn